

Double Sided Fishing Magnet-- Two 304 Stainless Steel Hooks.

This unique double sided fishing magnet uses two ring strong neodymium magnets which come with two removable eye bolt rings and threaded-through hole was designed in the middle and side of the magnet. Useful Magnets for magnet fishing, lifting, hanging, retrieving applications and industrial use.



Model	D (mm)	H (mm)	M1	M2	Strength (kg)	Weight (g)
F200*2	67	28	10	10	200	870
F300*2	74	28	10	10	300	967
F400*2	90	40	10	10	400	1500
F500*2	97	40	10	10	500	1600
F600*2	107	35	10	10	600	2740

Double Sided Fishing Magnet -- Only One 304 Stainless Steel Hook.

This unique double sided fishing magnet uses two round strong neodymium magnets which is specially designed with magnet fishing in mind. You won't have to worry which way the magnet is oriented under water since each side provides the same strength.



Model	D (mm)	H (mm)	L (mm)	M	Strength (kg)	Weight (g)
FB150*2	60	28	98	8	150	498
FB200*2	67	28	111	10	200	733
FB300*2	74	28	119	10	300	902
FB400*2	90	40	131	10	400	1500
FB500*2	97	40	140	10	500	1575
FB600*2	107	35	150	10	600	2740
FB1000*2	135	40	182	12	1000	3972

Note: all the strength of fishing magnets are the vertical magnetic pull-force which make the magnet pull away from the 20mm thickness steel plate of a tensile tester under ideal condition. (80mm/min)

Single Side Fishing Magnet -- Round Neodymium Magnet Design

This fishing magnet uses one strong round magnet, which design increases the contact area. Design for heavy duty and underwater application, ideal for fishing, lifting or recovering lost ferrous objects under water, for example water pump, ferrous tools, breakage of heavy metal objects, ancient objects. Also hanging, fixing application and hobby worldwide.



Model	D (mm)	h (mm)	H (mm)	M	Strength (kg)	Weight (g)
FMD48	48	10	53	8	100	172
FMD60	60	12	55	8	150	246
FMD67	67	12	57	10	200	376
FMD75	75	15	60	10	250	442
FMD90	90	18	63	10	400	925.9
FMD107	107	20	65	10	500	1410
FMD135	135	20	78	12	1000	2490

Single Side Fishing Magnet -Countersunk Neodymium Magnet Design.

This fishing magnet uses strong neodymium magnet with countersunk hole, which allows many types of mounting applications including hook, knob, or included eyelet. Screw it into a wall to hold tools, or position and hold lights, signs, and more.



Model	D (mm)	h (mm)	M	d (mm)	Strength (kgs)	Weight (g)
FMA48	48	11.5	8	17	110	197
FMA60	60	15	8	17	140	374.7
FMA75	75	15	10	21	250	632
FMA90	90	18	10	21	400	930
FMA107	107	20	10	21	500	1420
FMA120	120	20	12	24	600	1840

Note: all the strength of fishing magnets are the vertical magnetic pull-force which make the magnet pull away from the 20mm thickness steel plate of a tensile tester under ideal condition. (80mm/min)

Single Side Fishing Magnet - Ring Neodymium Magnet Design

The magnetic base with thread through hole is easy to instant the hook. And is the best suited for small sized magnetic products with very high pull strength.



Model	D (mm)	h (mm)	H (mm)	M	Strength (kg)	Weight (g)
FMR48	48	11.5	48	8	100	164
FMR60	60	12	50	8	140	269
FMR67	67	12	60	10	200	368
FMR75	75	15	60	10	250	537
FMR90	90	15	60	10	400	900
FMR107	107	20	63	10	500	1410
FMR135	135	20	68	12	1000	2490

Single side Fishing Magnet with External thread - Disc neodymium magnet Design

This magnetic base is threaded for easy and near instant assembly. Attach to a wall to hold tools, or position and hold lights, signs, and more.



Model	D (mm)	h (mm)	H (mm)	M	Strength (kg)	Weight (g)
FMR48	48	11.5	48	8	100	164
FMR60	60	12	50	8	140	269
FMR67	67	12	60	10	200	368
FMR75	75	15	60	10	250	537
FMR90	90	15	60	10	400	900
FMR107	107	20	63	10	500	1410
FMR135	135	20	68	12	1000	2490

Note: all the strength of fishing magnets are the vertical magnetic pull-force which make the magnet pull away from the 20mm thickness steel plate of a tensile tester under ideal condition. (80mm/min)

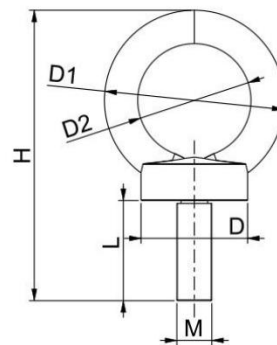
Single sided Fishing Magnet with Internal thread -- Round neodymium magnet Design.

This magnetic base is threaded for easy and near instant assembly of the included eyebolt. Attach to a wall to hold tools, or position and hold lights, signs, and more.



Model	D (mm)	h (mm)	H (mm)	M	Strength (kg)	Weight (g)
FMR48	48	11.5	48	8	100	164
FMR60	60	12	50	8	140	269
FMR67	67	12	60	10	200	368
FMR75	75	15	60	10	250	537
FMR90	90	15	60	10	400	900
FMR107	107	20	63	10	500	1410
FMR135	135	20	68	12	1000	2490

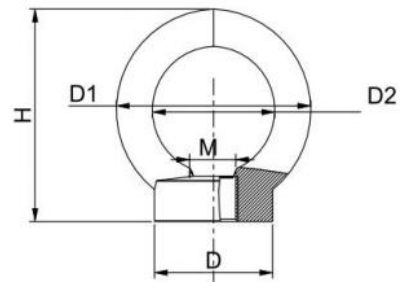
304 Stainless Steel Eye Bolt



Model	M	D (mm)	D1 (mm)	D2 (mm)	L (mm)	H (mm)
M8	8	18.3	35.5	20	16	49.8
M10	10	22.4	43.8	24	18	60.3
M12	12	26.8	49.1	29	20	67.3

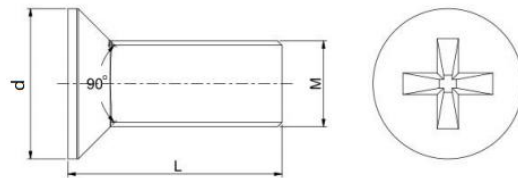
Note: all the strength of fishing magnets are the vertical magnetic pull-force which make the magnet pull away from the 20mm thickness steel plate of a tensile tester under ideal condition. (80mm/min)

304 Stainless Steel Eye Nut



Model	M	D (mm)	D1 (mm)	D2 (mm)	H (mm)
M4	4	8.6	18.7	10.8	18.9
M5	5	11.5	23	11	23.3
M6	6	15	26.8	12	29.5
M8	8	18.3	35.5	19	36.8
M10	10	22.4	43.8	21	45.3
M12	12	28.4	48.35	29.63	48

304 Stainless Steel Screw



Model	M	d (mm)	L (mm)
M5	5	9	12
M6	6	11.5	17
M8	8	15	25
M10	10	17.5	30
M12	12	21	35

Note: all the strength of fishing magnets are the vertical magnetic pull-force which make the magnet pull away from the 20mm thickness steel plate of a tensile tester under ideal condition. (80mm/min)